



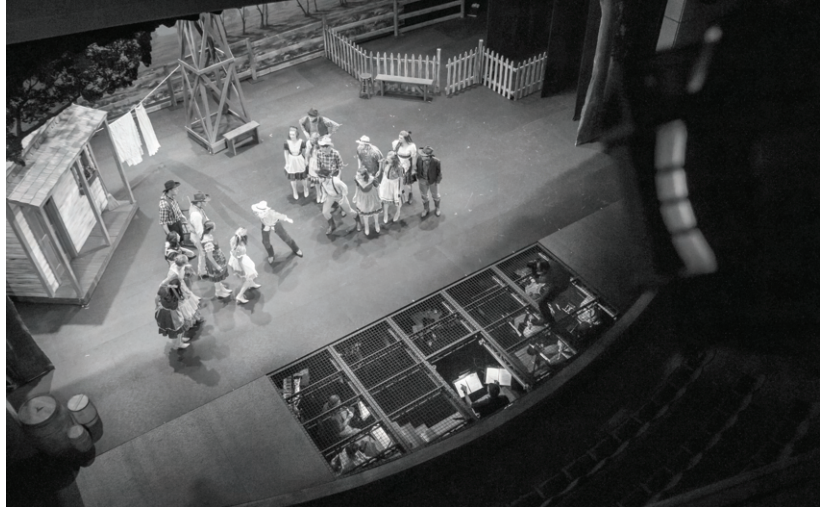
PRODUCTIONS UNLIMITED, INC.

safepit+[®]

Orchestra Pit Solutions

About safepit+[®]

safepit+[®] is an orchestra pit safety system by Productions Unlimited, Inc. It is designed specifically to provide unparalleled safety while offering multiple options in stage/pit configuration. The walkable open mesh design is acoustically transparent, allowing the system to stay in place during performances while providing safety for those in the pit as well as on the stage. safepit+[®] is designed to be overlaid with polyonyx+[®] or other solid surface material when a solid pit cover is required.



The safepit+[®] system provides safety for musicians in the pit as well as the actors onstage Oklahoma! at Christ Church Episcopal School (Greenville, SC).

System Highlights

- safepit+[®] provides the utmost in safety for multiple stage configurations (full/partial pit, audience seating, or stage extension).
- We can find solutions for any orchestra pit, even those with a pit lift.
- A custom support structure will be developed for your space, allowing maximum area below the safepit+[®] structure.
- The open mesh configuration is acoustically transparent, letting sound travel to the audience without affecting quality.
- The walkable wire mesh provides a 20 psf (97.6 kg/m²) rated floor that can support performers and crew.
- The walkable wire mesh provides protection from dangers above for performers in the pit, while performers onstage are protected from falling into the pit.
- Mesh decks have a black powder coat finish (custom colors on request).
- safepit+[®] is designed to be assembled or reconfigured with no specialized tools, with as few as two people in a matter of hours.
- The removable panel for the conductor is optional and includes removable guard rails for rehearsals.
- Any panel can easily be removed, creating flexibility for openings and modular traps.
- When the orchestra pit is not in use, the system can be covered with polyonyx+[®] or other solid sheet overlay to provide 150 psf (732 kg/m²) stage extension.

U.S. Patent 9,631,385
Canadian Patent 2,933,878



PRODUCTIONS UNLIMITED, INC.

safepit+[®]

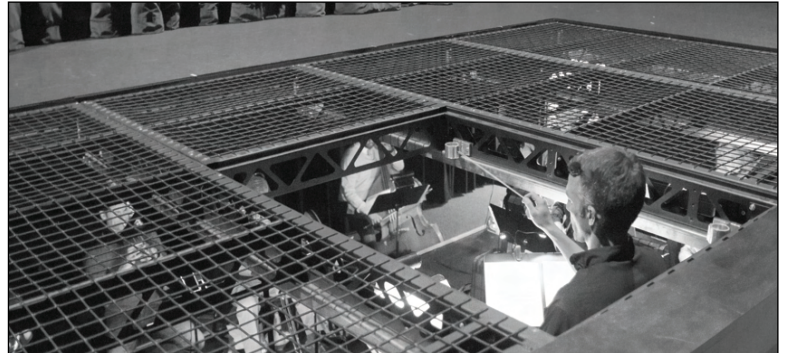
Orchestra Pit Solutions

Material Specifications

- Metal truss structure
- Metal support legs and clips
- Camloc 1/4-turn assembly hardware
- Heavy wire mesh

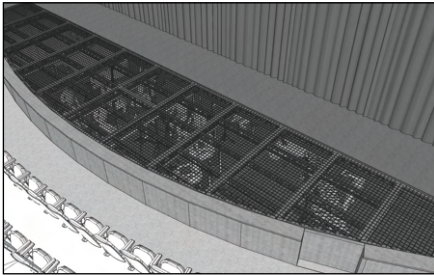
Live Load Ratings

- Open Mesh = 20 psf (97.6 kg/m²)
- With Deck Overlay = 150 psf (732 kg/m²)

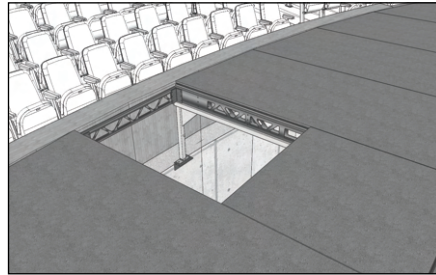


The removable panel allows the conductor to communicate with musicians and actors.

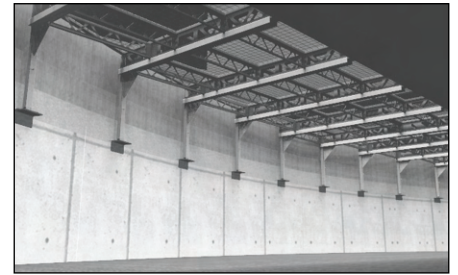
System Components



Mesh decks protect musicians in the pit



polyonyx+[®] overlay with conductor panel removed



Maximum space in pit with system in place

Mesh Decks

The mesh decks consist of truss frames with heavy wire mesh welded to the top. Mesh decks are custom made to fit the needs of your facility. They provide a walkable 20 psf (97.6 kg/m²) rated floor that is also acoustically transparent.

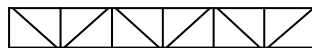
polyonyx+[®] Panels

polyonyx+[®] can be used on top of the mesh decks to create a solid surface stage extension or pit filler at different elevations. The panels are custom made and are secured to the decks by retainers attached from underneath the decks.

Support Structure

Support beams and legs are specially engineered for your facility to provide stability while also maximizing the amount of space available in the pit.

A product by:



PRODUCTIONS UNLIMITED, INC.

www.productionsunlimitedinc.com

www.safepitplus.com

Toll Free: 844.579.7455